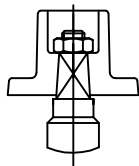
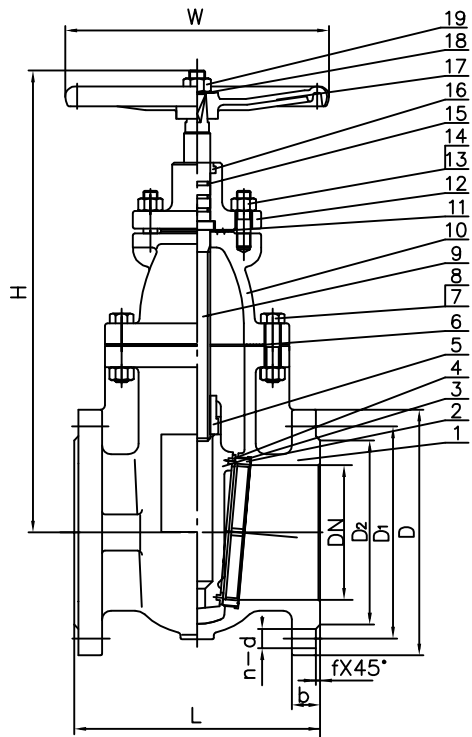


# JRW CAST IRON GATE VALVE (NON-RISING STEM) BS5163 PN16



It can be operated with wrench  
wrench head according to  
customer's requirement.

- Design and Manufacture Conform to BS5163
- Flange dimensions Conform to BS4504 PN16
- Face to Face dimensions Conform to BS5163 PN16
- Testing Conform to BS6755

## MATERIALS

NO.	PART NAME	MATERIAL(C.I.)	MATERIAL(D.I.)
1	BODY	ASTM A126 B	ASTM A536
2	SEAT RING	ASTM B62 or 13Cr	ASTM B62 or 13Cr
3	WEDGE	ASTM A126 B	ASTM A536
4	WEDGE RING	ASTM B62 or 13Cr	ASTM B62 or 13Cr
5	WEDGE NUT	Mn-BRASS	Mn-BRASS
6	BONNET GASKET	GRAPHITE+STEEL	GRAPHITE+STEEL
7	BONNET BOLT	ASTM A307	ASTM A307
8	BONNET NUT	CARBON STEEL	CARBON STEEL
9	STEM	ASTM B16 or 13Cr	ASTM B16 or 13Cr
10	BONNET	ASTM A126 B	ASTM A536
11	STUFFING BOX GASKET	GRAPHITE+STEEL	GRAPHITE+STEEL
12	GLAND	ASTM A126 B	ASTM A536
13	BOLT	CARBON STEEL	CARBON STEEL
14	NUT	CARBON STEEL	CARBON STEEL
15	O-RING	NBR	NBR
16	DUSTPROOF RING	NBR	NBR
17	HANDWHEEL	ASTM A126 B	ASTM A126 B
18	WASHER	CARBON STEEL	CARBON STEEL
19	NUT	CARBON STEEL	CARBON STEEL

## DIMENSIONS (mm)

DN	L	D	D <sub>1</sub>	D <sub>2</sub>	b	n-d	f	H	W	Kg
50	178	165	125	99	20	4-19	3	350	180	18
65	190	185	145	118	20	4-19	3	369	180	25
80	203	200	160	132	22	8-19	3	409	200	28
100	229	220	180	156	24	8-19	3	458	200	45
125	254	250	210	184	26	8-19	3	516	240	62
150	267	285	240	211	26	8-23	3	570	240	78
200	292	340	295	266	30	12-23	3	753	320	138
250	330	405	355	319	32	12-28	3	807	320	198
300	356	460	410	370	32	12-28	4	940	400	282
350	381	520	470	429	36	16-28	4	1002	505	415
400	406	580	525	480	38	16-31	4	1100	556	525
450	432	640	585	548	40	20-31	4	1210	610	634
500	457	715	650	609	42	20-34	4	1380	640	946
600	508	840	770	720	48	20-37	5	1455	640	1280