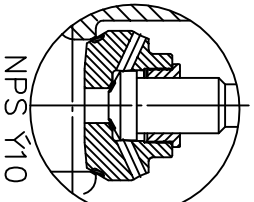
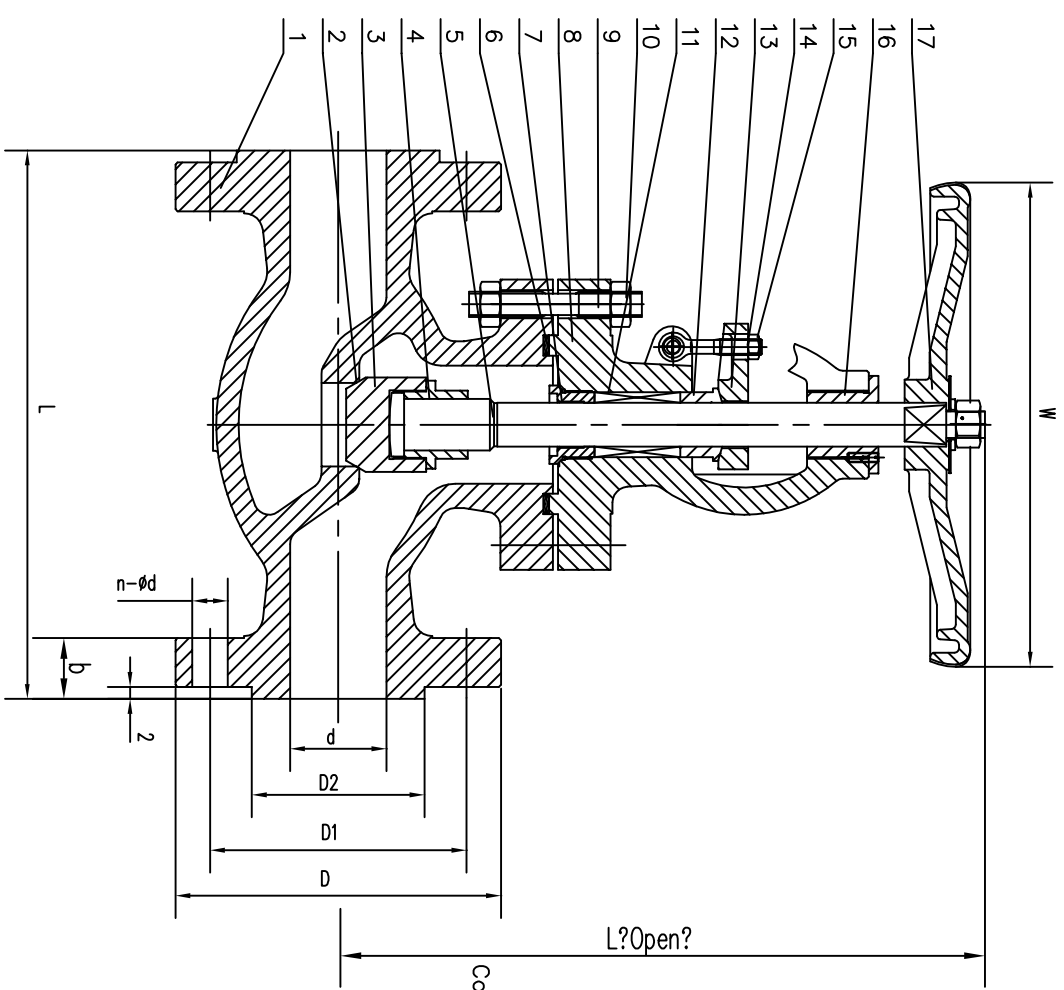


Nominal Diameter	Main Dimension class 150										
	inch	mm	d	D	D1	D2	b	n- ϕ d	L	Hamel	W
2"	50	51	152	120.7	92	16	4- ϕ 19	203	361	200	
2 1/2"	65	64	178	139.7	105	18	4- ϕ 19	216	368	200	
3"	80	76	190	152.4	127	19	4- ϕ 19	241	415	250	
4"	100	102	229	190.5	157	24	8- ϕ 19	292	465	250	
5"	125	127	254	215.9	186	24	8- ϕ 22	356	486	300	
6"	150	152	279	241.3	216	26	8- ϕ 22	406	512	350	
8"	200	203	343	298.5	270	29	8- ϕ 22	495	650	400	
10"	250	254	406	362.0	324	31	12- ϕ 26	622	920	500	
12"	300	305	483	431.8	381	32	12- ϕ 26	698	950	600	



L?Open?
Completed with double disc
NPS Y10

17	Hand Wheel	Ductile Iron	
16	Stem Nut	ZCuAl10Fe3	
15	Gland Nut	ASTM A194 2H	
14	Gland Eyebolt	ASTM A193 B7	
13	Gland Flange	ASTM A216 WCB	
12	Gland	ASTM A182 F6a	
11	Stem Packing	Graphite	
10	Bonnet Nut	ASTM A194 2H	
9	Bonnet Bolt	ASTM A193 B7	
8	Bonnet	ASTM A216 WCB	
7	Backseat bushing	ASTM A182 F6a	
6	Gasket	Graphite+304	
5	Stem	ASTM A182 F6a	
4	Dise Nut	ASTM A182 F6a	
3	Dise	A216 WCB+13Cr	
2	Seat Ring	ASTM A105+13Cr	
1	Body	ASTM A216 WCB	
NO	PART NAME	MATERIAL	REMARKS

GLOBE VALVE CLASS 150

Design and Manufacture	BS 1873	
Face to Face Dimensions	ANSI B16.10	
Flange Ends Dimensions	ANSI B16.5	
Pressure Test	API STD.598	
JRW VALVE DIVISION	DATE	10.08.2003