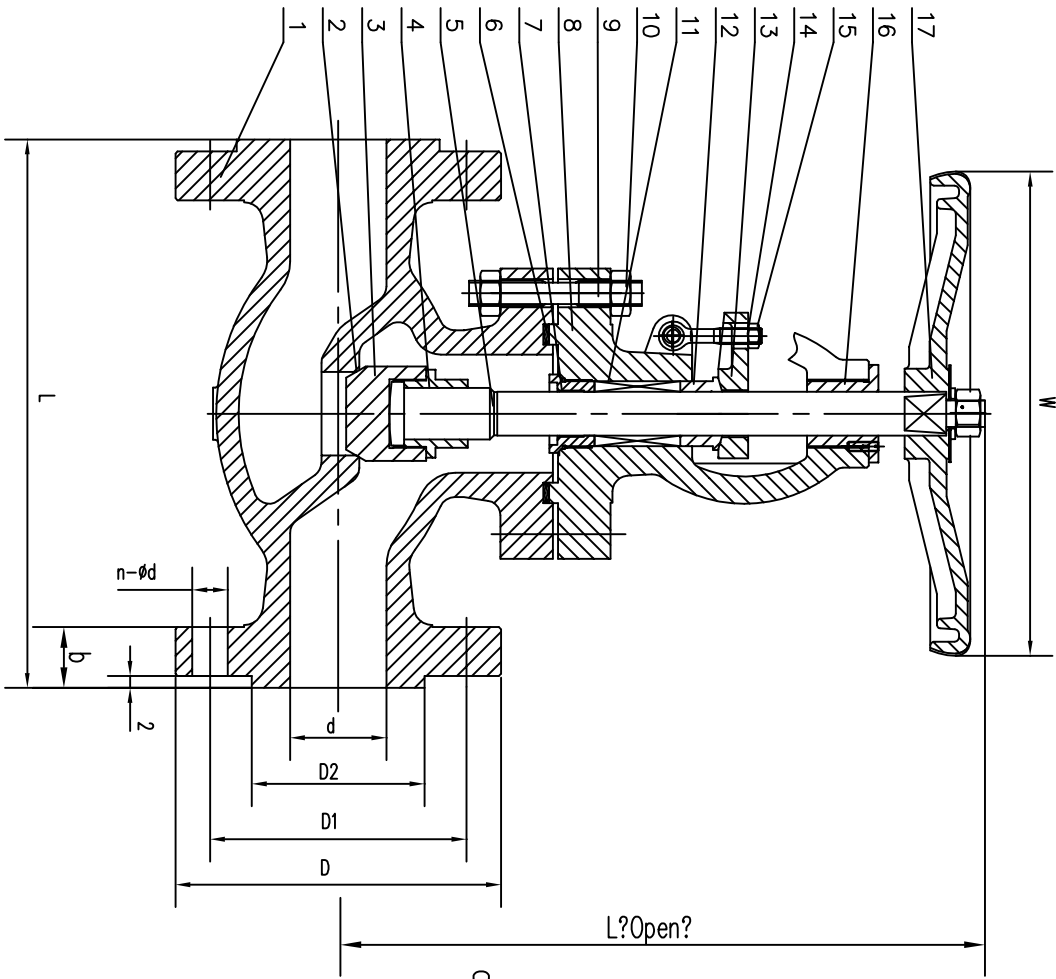


Nominal Diameter	Main Dimension class 300										
	inch	mm	d	D	D1	D2	b	n- ϕ d	L	Hand	W
2"	50	51	165	127.0	92	23	8- ϕ 19	267	382	200	
2 1/2"	65	64	190	149.2	105	26	8- ϕ 22	292	390	250	
3"	80	76	210	168.3	127	29	8- ϕ 22	318	443	250	
4"	100	102	254	200.0	157	32	8- ϕ 22	356	494	300	
5"	125	127	279	235.0	186	35	8- ϕ 22	400	512	350	
6"	150	152	318	269.9	216	37	12- ϕ 22	444	525	400	
8"	200	203	381	330.2	270	42	12- ϕ 26	559	717	500	
10"	250	254	445	367.4	324	48	16- ϕ 29	622	840	600	



NPS Y10
Completed with double disc

17	Hand Wheel	Ductile Iron	
16	Stem Nut	ZCuAl10Fe3	
15	Gland Nut	ASTM A194 2H	
14	Gland Eyebolt	ASTM A193 B7	
13	Gland Flange	ASTM A216 WCB	
12	Gland	ASTM A182 F6a	
11	Stem Packing	Graphite	
10	Bonnet Nut	ASTM A194 2H	
9	Bonnet Bolt	ASTM A193 B7	
8	Bonnet	ASTM A216 WCB	
7	Backseat bushing	ASTM A182 F6a	
6	Gasket	Graphite+304	
5	Stem	ASTM A182 F6a	
4	Dise Nut	ASTM A182 F6a	
3	Dise	A216 WCB+13Cr	
2	Seat Ring	ASTM A105+13Cr	
1	Body	ASTM A216 WCB	
NO	PART NAME	MATERIAL	REMARKS

GLOBE VALVE CLASS 300

Design and Manufacture	BS 1873	
Face to Face Dimensions	ANSI B16.10	
Flange Ends Dimensions	ANSI B16.5	
Pressure Test	API STD.598	
JRW VALVE DIVISION	DATE	10.08.2003